

Ensure the silicone is sitting parallel on the hole below it. Hold at eye level to check the position is correct

Ensuring that the AQUAvalve floods and drains correctly

- 1** Making sure your AQUAvalve floods and drains correctly is simply achieved and only takes a few seconds.
- 2** Hold the AQUAvalve at eye level so that you can see the silicone fitted to the top float resting on the hole below it.
- 3** The silicone must create a tight seal when touching the hole.
- 4** If it looks like it is not sitting parallel on the hole below, simply lift the top float and apply pressure to one side of the silicone, drop the float and hold at eye level again. Repeat the procedure if necessary.

Care and maintenance

- 1** At the end of your growing season, clean the AQUAvalve using warm soapy water. Using an old tooth brush will help.

The AQUAvalve is easily disassembled. The top float will slide all the way across and the bottom float is unclipped from its pivoting position. The circular discs fitted to the top float can also be removed by using pliers to grip the raised point.

At this point is it advisable to remove the silicones to avoid them being lost.
- 2** It is also handy to have a paper clip or pipe cleaner to hand so that you can push it through the AQUAvalve nozzle, this will remove any lime scale build up that may have occurred during the growing season.

Blowing through the AQUAvalve nozzle will also help to remove any build up. Do not under any circumstances use a drill & drill bit to clear the AQUAvalve nozzle.

This will potentially damage the AQUAvalve beyond repair.

- Minimum pot size 10 litre - when placed directly in tray
- If smaller pots are to be used create a gravel bed inside the tray, to a depth of 25mm (1")
- Always sit the AQUAvalve and cover directly on the trays surface, never sit on capillary matting
- Clean bottom and side of pots before placing in the tray
- With AQUAvalve5 mineral or organic fertilisers may be fed to the easy2GO via the reservoir and pipework.
- Organic fertilisers will require a water pump in the reservoir running for 15mins every 2hrs and cleaning of the reservoir, pump, and filter each time the reservoir empties. Flush pipework with plain water every time the reservoir empties.
- Raise tank to a minimum of 150mm (6") above the tray level
- If used outdoors for long periods of time, it is advisable to place a small weight on top of the AQUAvalve cover, due to adverse weather conditions
- Maximum tray size 1.2m², minimum tray depth 30mm
- Ensure tray is level
- Never use the easy2GO without a filter
- Ensure pots have holes in the bottom
- Never run reservoir empty, refill when a third of the solution is left



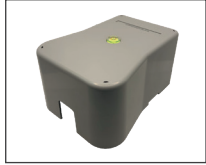
**Your easy2GO Kit
set-up guidelines**



easy2GO contents



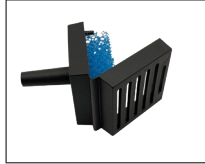
1x AQUAvalve5



1x AQUAvalve cover
1x circular spirit level



1x 16-9mm Click Fit
Adapter and Filter



1x 9mm golf filter



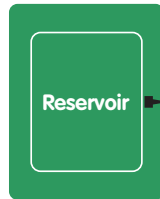
1x 9mm top hat grommet



1 x 1.5m 9mm pipe

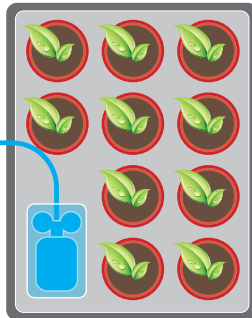
Suggested layouts

Using 9mm golf filter



* Smaller pots may be used if a 25mm gravel bed is created in the tray

Minimum pot size 10 litres
(if placed directly in tray)*



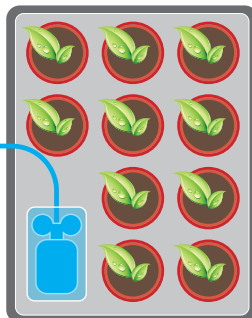
Maximum tray size 1.2m/sq

Using 16-9mm inline filter and standard hosepipe



— 9mm pipe
— 16mm pipe
■ 9mm top hat grommet

■ 9mm golf filter
■ 16-9mm Click Fit Adapter and Filter
■ AQUAvalve5



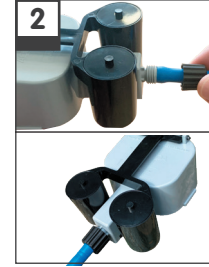
Minimum tray depth 30mm

Assembly instructions

1

For ease of assembly lay out the contents of your easy2GO kit. Then place your flat tray into position. Minimum recommended tray depth is 30mm. Maximum tray size 1.2m/sq. Ensure your tray is level.

2



Remove threaded collar from AQUAvalve. Push one end of the 9mm pipe through the collar and attach the pipe to AQUAvalve nozzle. Rescrew the AQUAvalve collar - **DON'T overturn...** when you feel it grip **STOP**

3



Place AQUAvalve cover over the AQUAvalve. The AQUAvalve and cover should be placed directly onto the tray. Never sit the AQUAvalve and cover on capillary matting.

4



Ensure the circular spirit level indicates the tray is level, adjust if required. Place plant pots into tray.

5



Cut 9mm pipe to appropriate length if required.

Connection Option 1

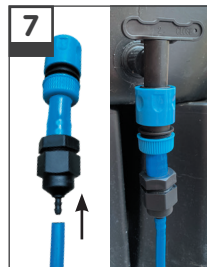
6



Connecting your easy2GO Kit to a simple plastic container. Drill a hole into the side of the container, 25mm from the base. Use a 3-5mm drill bit to create a pilot hole and a 12.5mm drill bit for the final hole. Insert 9mm Top Hat Grommet into 12.5mm hole, push 9mm pipe through the Grommet and push 9mm filter into 9mm pipe.

Connection Option 2

7



Connecting to a reservoir tap. Connect 9mm pipe to the 16-9mm Click Fit Adapter and Filter. Connect the 16-9mm Click Fit Adapter and Filter to your reservoir tap. Allow your plants to establish for 2-8 weeks before switching on.

8



Fill reservoir with water and add liquid feed if required.

Note: The easy2GO kit can be placed anywhere in the tray